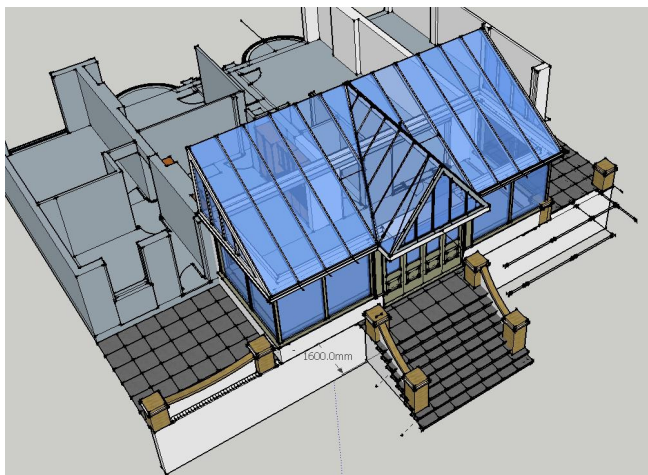
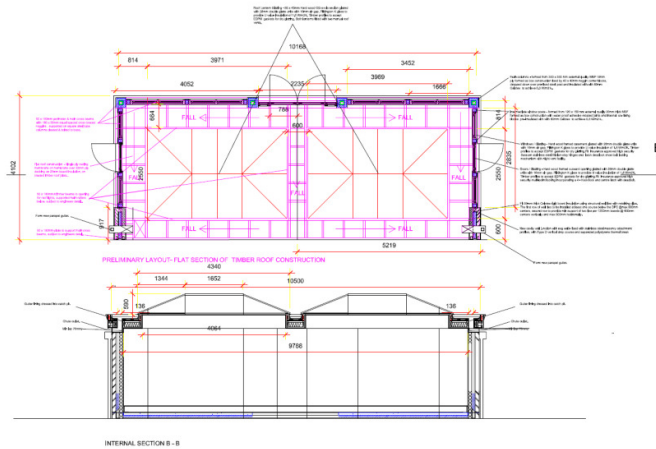




Case Study –
Conservatory/Orangery, Kent

Brief – To design and plan options for a space that would form a natural extension of the central kitchen to the rear of the double fronted house, without a major reduction in natural light.

Scheme Design – The obvious choice was an Orangery type building with twin raised lantern arrangement to maximise light into the main house. The predominately timber framed windows and door sets to provide a “Pavilion” appearance. The setting out of the floor plan was dictated by a modular size for the window bays to minimise costly purpose made joinery repetition.



Scope of work – Produce fully detailed CAD drawings for submission of full planning and building control applications, with detailed specifications, cost spread sheets and outline programme.

Spacedesigneurope

M : +44 [0]7710 402 457

Email: john@spacedesigneurope.co.uk

www.spacedesigneurope.co.uk